

OPENING DOORS SINCE 1843

Loveitts<sup>est. 1843</sup>  
THE ESTATE AGENTS



Kenpas Highway  
Coventry, CV3 6PD

Offers Over £310,000



D



Kenpas Highway

Coventry, CV3 6PD

A fantastic opportunity to acquire a two double bedroom, detached bungalow in the highly sought after area of Styvechale and offered with no onward chain.

The accommodation is versatile and comprises an entrance porch, entrance hallway with storage cupboards, lounge with patio doors leading into a conservatory which gives access out onto the rear garden, a fitted kitchen with access to the side lean to, two double bedrooms, a family bathroom and separate wc.

Externally the property offers a well maintained rear garden being mostly laid to lawn with patio area, a front garden, driveway and a garage. Further benefits include gas central heating and double glazing throughout.

If you're looking to sell your property please contact us here for a FREE Market Appraisal <https://valuation.loveitts.co.uk/home/835-loveitts>





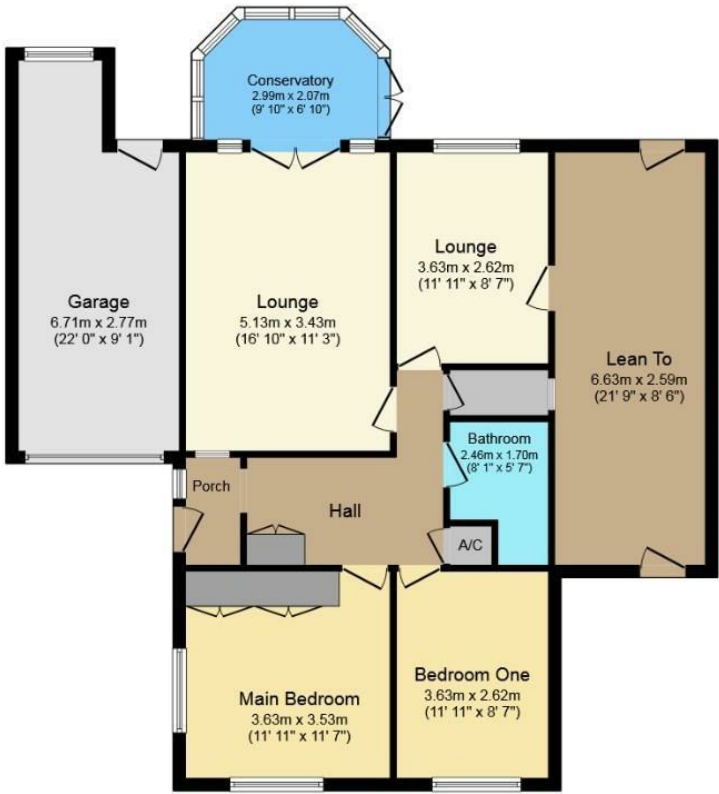


- Highly Sought After Location
- Detached Bungalow
- Two Double Bedrooms
- Conservatory
- Side Lean To
- Garage & Driveway
- Front & Rear Garden
- No Onward Chain
- Council Tax Band D



Floor Plan

Area Map

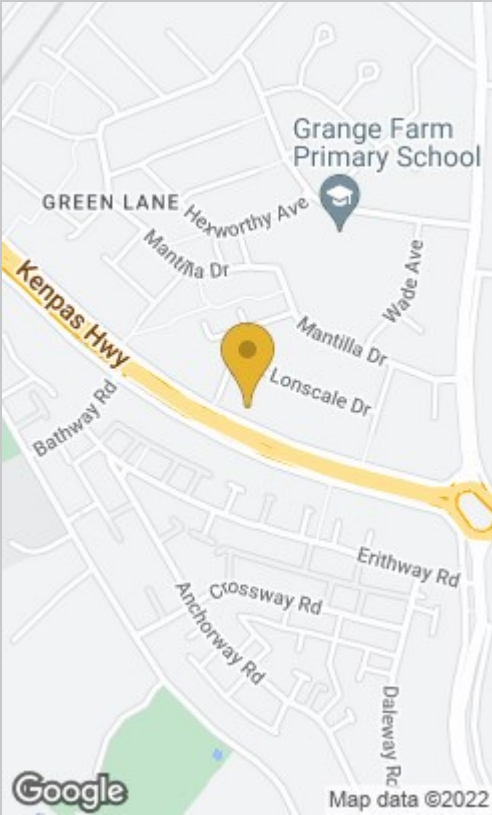


Floor Plan

Floor area 109.4 sq.m. (1,177 sq.ft.) approx

Total floor area 109.4 sq.m. (1,177 sq.ft.) approx

This Floor Plan is for illustration purposes only and may not be representative of the property. The position and size of doors, windows and other features are approximate. Unauthorized reproduction prohibited. © PropertyBOX



Energy Efficiency Rating

	Current	Potential
Very energy efficient - lower running costs		
(92 plus) A		
(81-91) B		84
(69-80) C	67	
(55-68) D		
(39-54) E		
(21-38) F		
(1-20) G		
Not energy efficient - higher running costs		
England & Wales	EU Directive 2002/91/EC	

These particulars, whilst believed to be accurate are set out as a general outline only for guidance and do not constitute any part of an offer or contract. Intending purchasers should not rely on them as statements of representation of fact, but must satisfy themselves by inspection or otherwise as to their accuracy. No person in this firm's employment has the authority to make or give any representation or warranty in respect of the property.



Coventry  
29 Warwick Row, Coventry CV1 1DY  
024 7625 8421

Registered in England & Wales Company no. 7558151